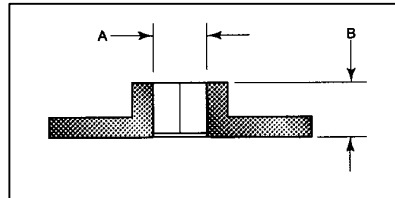
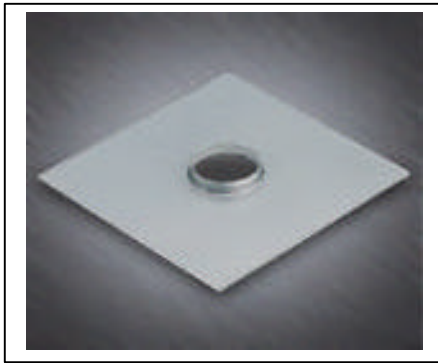


The Institute For Competitive Product Design

Sheet Metal Design

Extrusion Tool (Form-Up / Form-Down)

Extrusions can be used for a broad spectrum of applications, such as self-tapping screws, cooling tube holders, air flow applications, and tread plate.

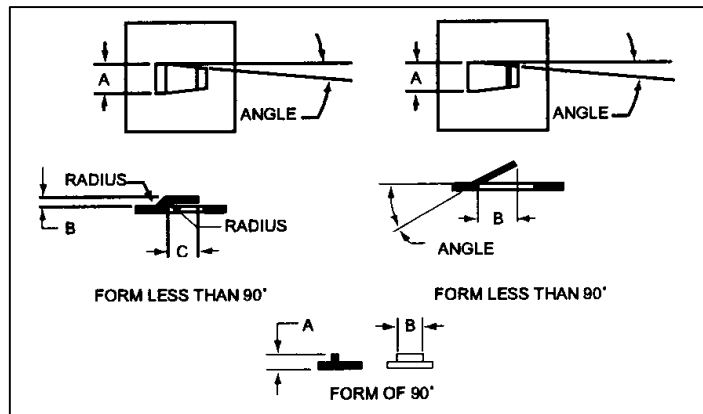
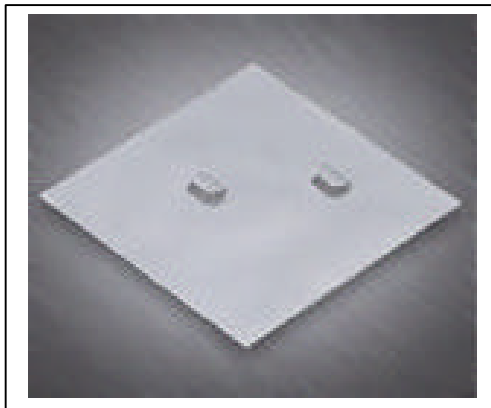


STD. SIZES

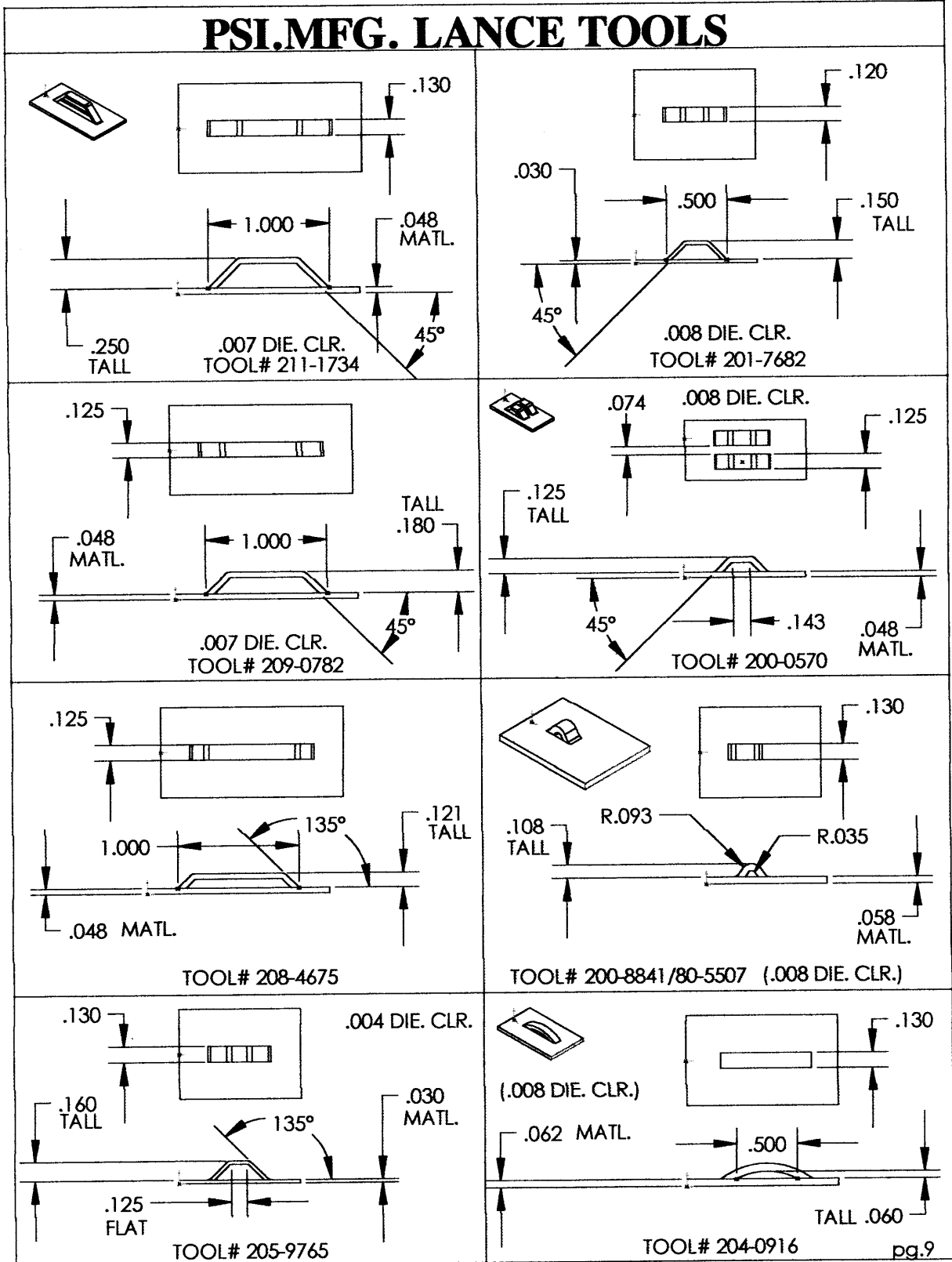
.106	(6-32)
.136	(8-32)
.150	(10-24)
.159	(10-32)
.203	(1/4-20)
.098	(M-3)
.130	(M-4)
.165	(M-5)
.197	(M-6)

Lance and Forms (Form-Up)

Lance and forms are used in various applications, including air flow, decoration, card guides, location markers, shear tabs, wire harnesses and clip attachments. Lance and Forms of 90° must be a minimum of two material thickness high overall.

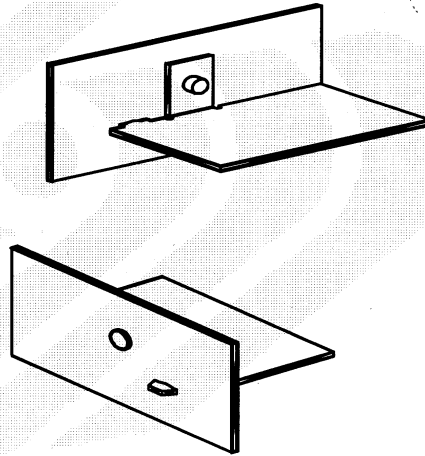


The Institute For Competitive Product Design
 Sheet Metal Design



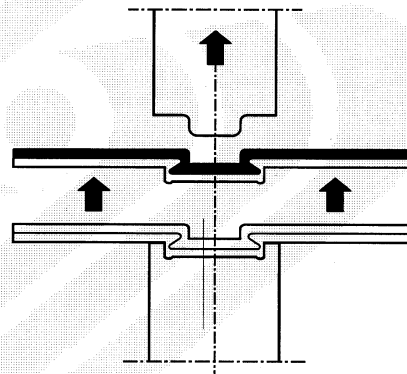
Joining Methods

Tab and Screw Joint



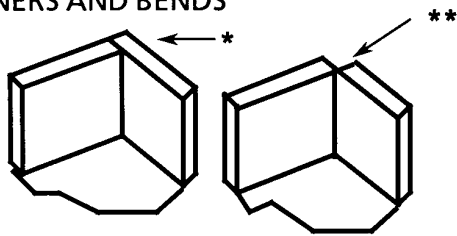
Joining Methods

Tox-Joining

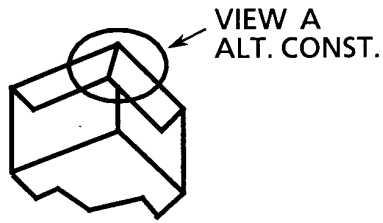


The Institute For Competitive Product Design
Sheet Metal Design

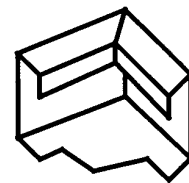
CORNERS AND BENDS



SINGLE BEND



DOUBLE BEND



TRIPLE BEND

*OVERLAP JOINT
 **OPEN CORNER

